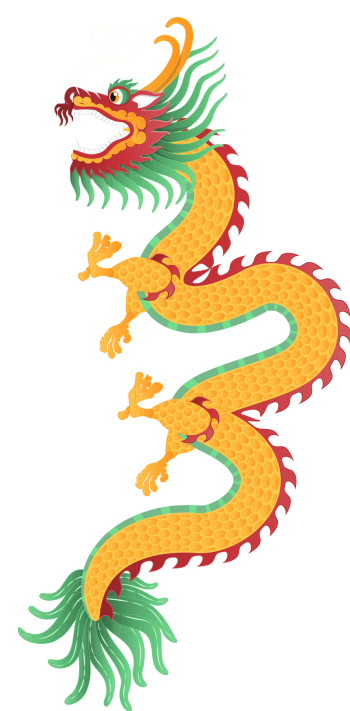
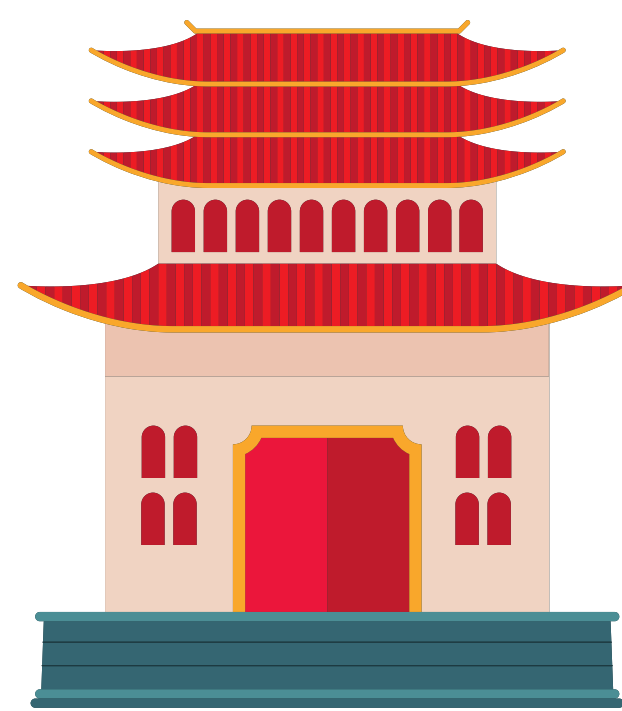
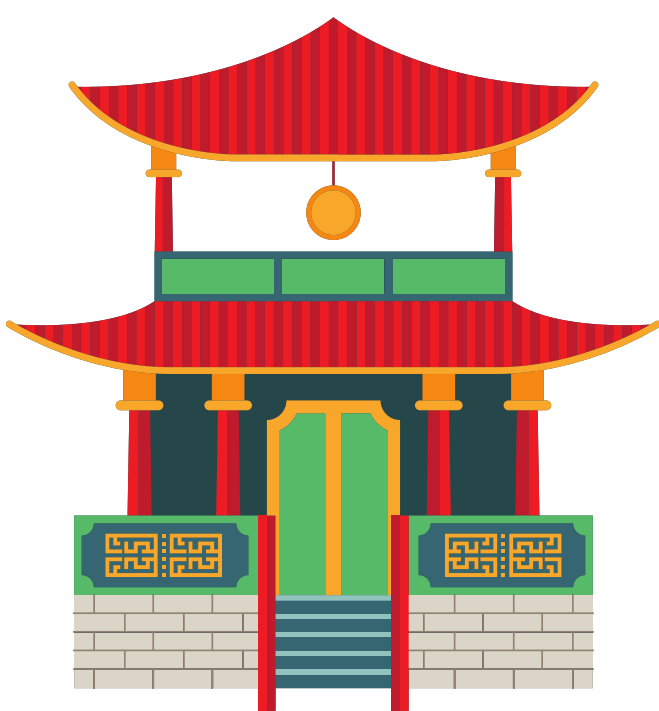


CHINA

PEOPLE'S REPUBLIC OF CHINA



GOVERNMENT

Authoritarian Communist

LEADER

President Xi Jinping

China is an authoritarian communist state with a government structure rooted in the principles of the Chinese Communist Party (CCP). The CCP, led by a central committee, maintains strict control over political power, suppressing dissent and opposition. The government's decision-making process is concentrated within the CCP leadership, with limited political pluralism, and it exercises significant influence over all aspects of Chinese society, including the economy, media, and social institutions.